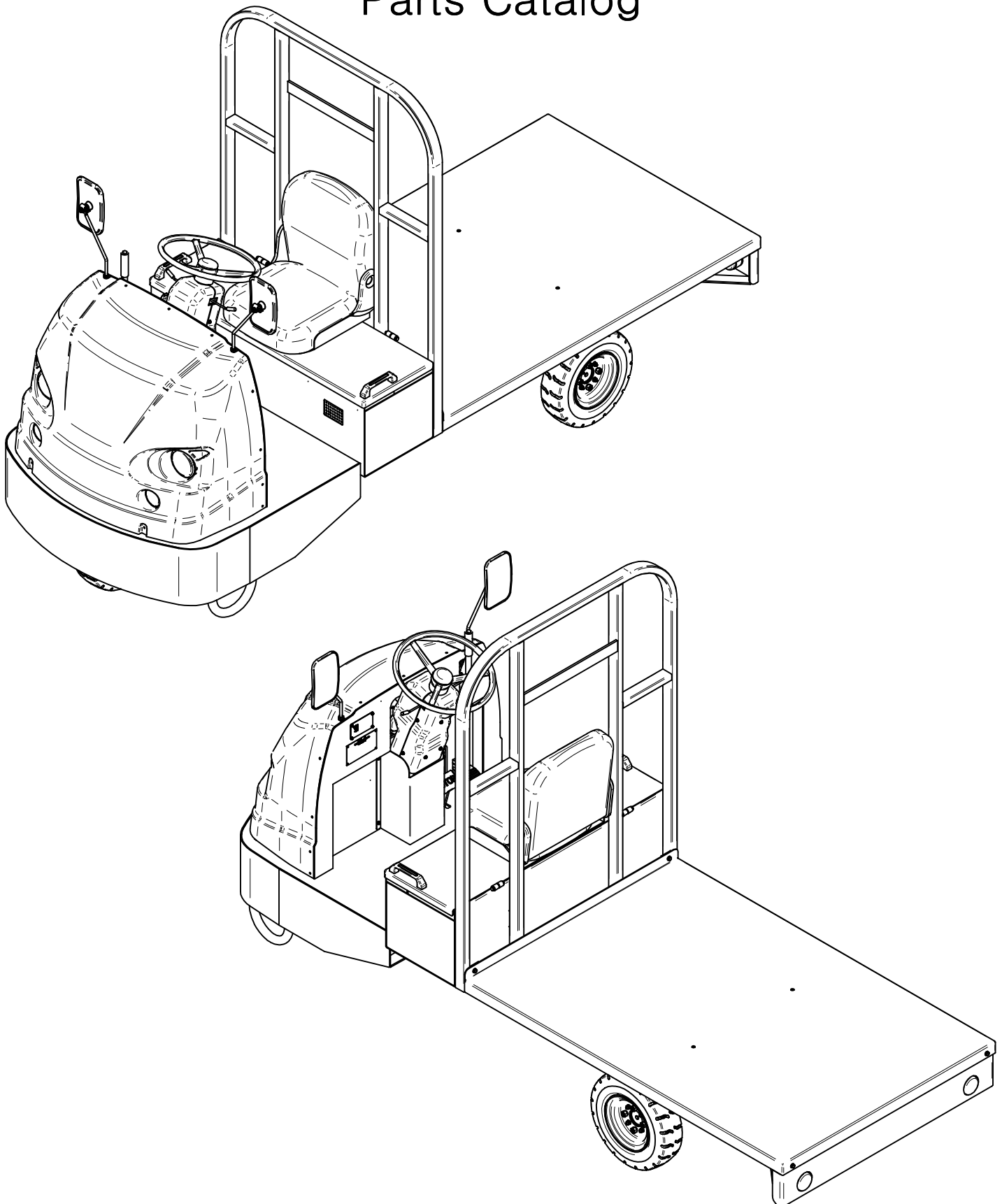


# Parts Catalog



## Table Of Contents

### SECTION 1 Finish and Accessories

Truck Final Assembly	-----	1-2
Finish Instructions	-----	1-4

### SECTION 2 Drive System and Wheels

Drive System	-----	2-2
Steering System	-----	2-4
Front Wheel Assembly	-----	2-6

### SECTION 3 Brake System and Accelerator

Parking Brake and Accelerator System	-----	3-2
Foot Brake System	-----	3-4

### SECTION 4 Body Frame

Battery Cover Assembly	-----	4-2
Deck Assembly	-----	4-4

### SECTION 5 Electrical System and Components

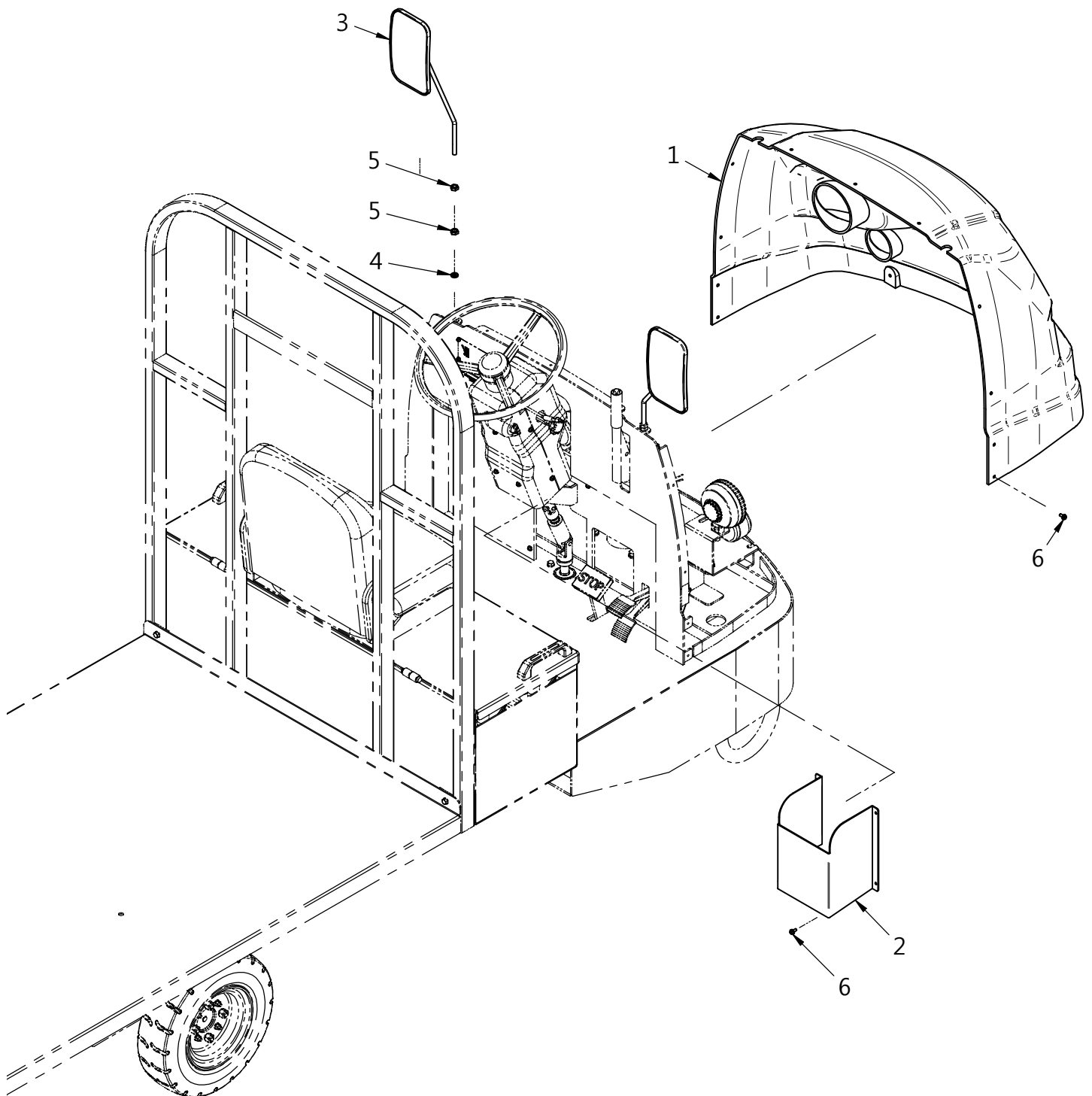
Electrical System	-----	5-2
Controller Panel Assembly	-----	5-4

### SECTION 6 Schematics

Assembly Drawing	-----	6-2
Electrical Schematic	-----	6-3

## **SECTION 1 Finish and Accessories**

Truck Final Assembly	-----	2-2
Finish Instructions	-----	2-4



**Figure 1-1 : Truck Final Assembly**

**Electric Platform Truck <SPT-1000 3W>**

**Finish and Accessories  
Truck Final Assembly**

FIGURE 1-1 ITEM NO.	PART NUMBER 코 드 번 호	DESCRIPTION 부 품 명	Q'TY 수 량	REMARKS 비 고
1	41ST-4004080	전면 커버 / FRONT COVER	1	
2	41PT-10050400	조향 커버 / STEERING COVER	1	
3	49PT-ET1000	백 미러 / BACK MIRROR	2	
4	4AWS-10	스프링 와셔_M10 / SPRING WASHER_M10	2	
5	4SNH-10	너트_M10 / NUT_M10	4	
6	4ABD-06015S	셈스 볼트_M6x15L / SEM'S BOLT_M6x15L	15	

List 1-1 : Truck Final Assembly

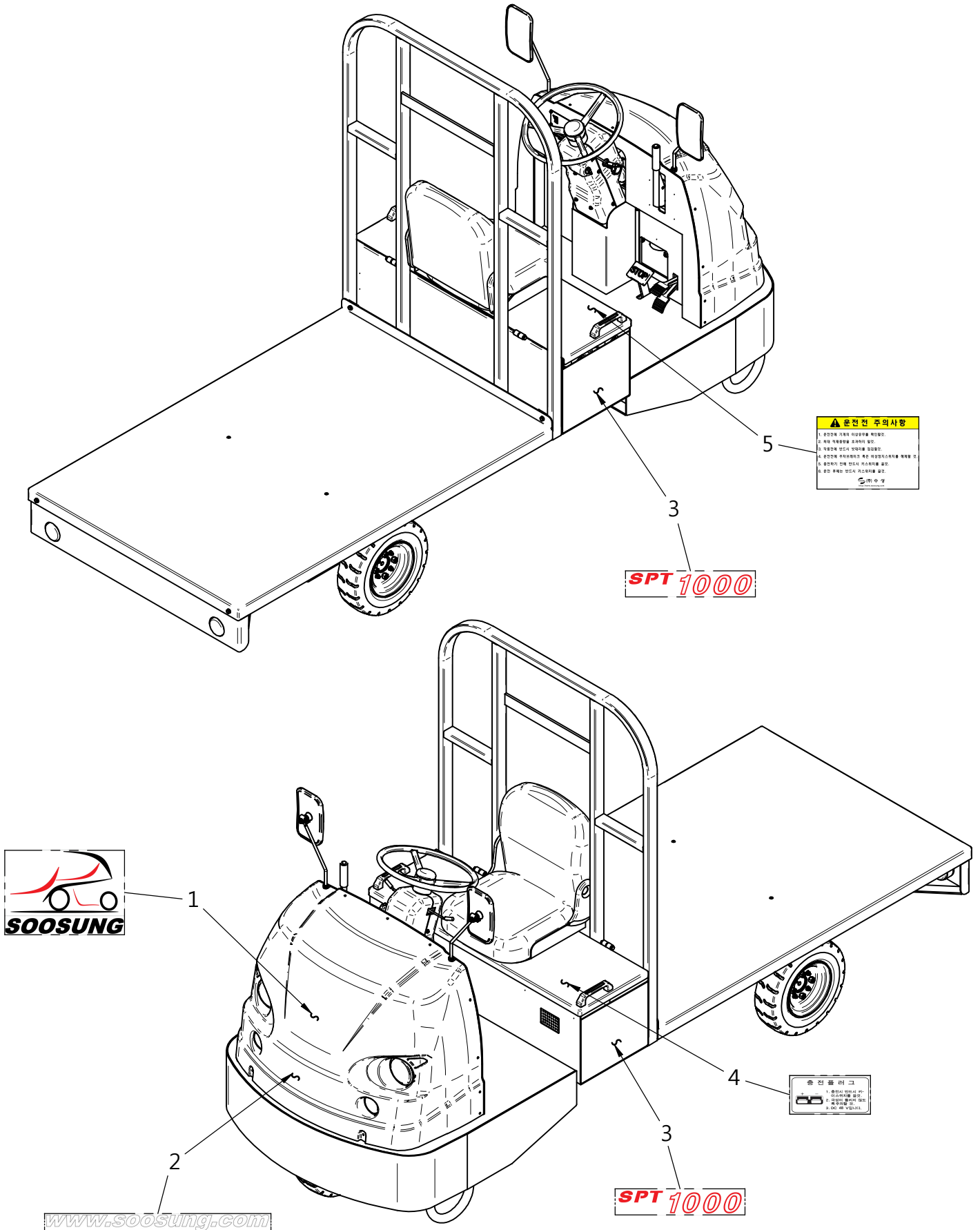


Figure 1-2 : Finish Instructions

**Finish Instructions**

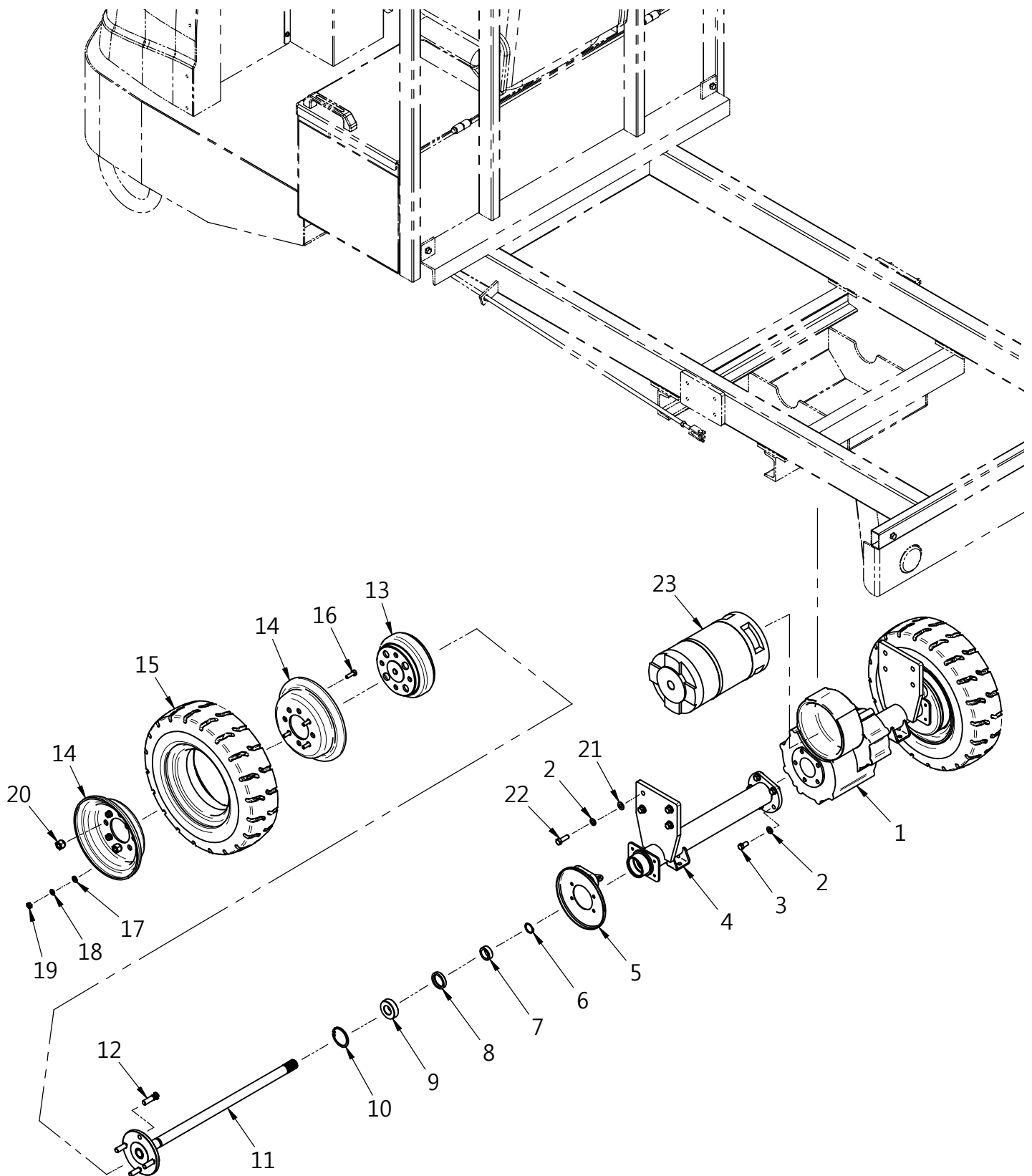
FIGURE 2-1 ITEM NO.	PART NUMBER 코 드 번 호	DESCRIPTION 부 품 명	Q'TY 수 량	REMARKS 비 고
1	4D03-0059	스티커, 심볼 / DECAL, SYMBOL	1	
2	4D03-0121	스티커, 주소 / DECAL, www.soosung.com	1	
3	4D03-0002	스티커, 기종명 / DECAL, SPT-1000	2	
4	4D01-0071	스티커, 배터리 플러그 / DECAL, BATTERY PLUG	1	
5	4D01-0247	스티커, 운전전 주의사항 / DECAL, WARNING	1	

List 1-2 : Finish Instructions

## **SECTION 2 Drive System and Wheels**

Drive System	-----	2-2
Steering System	-----	2-4
Front Wheel Assembly	-----	2-6





**Figure 2-1 : Drive System**

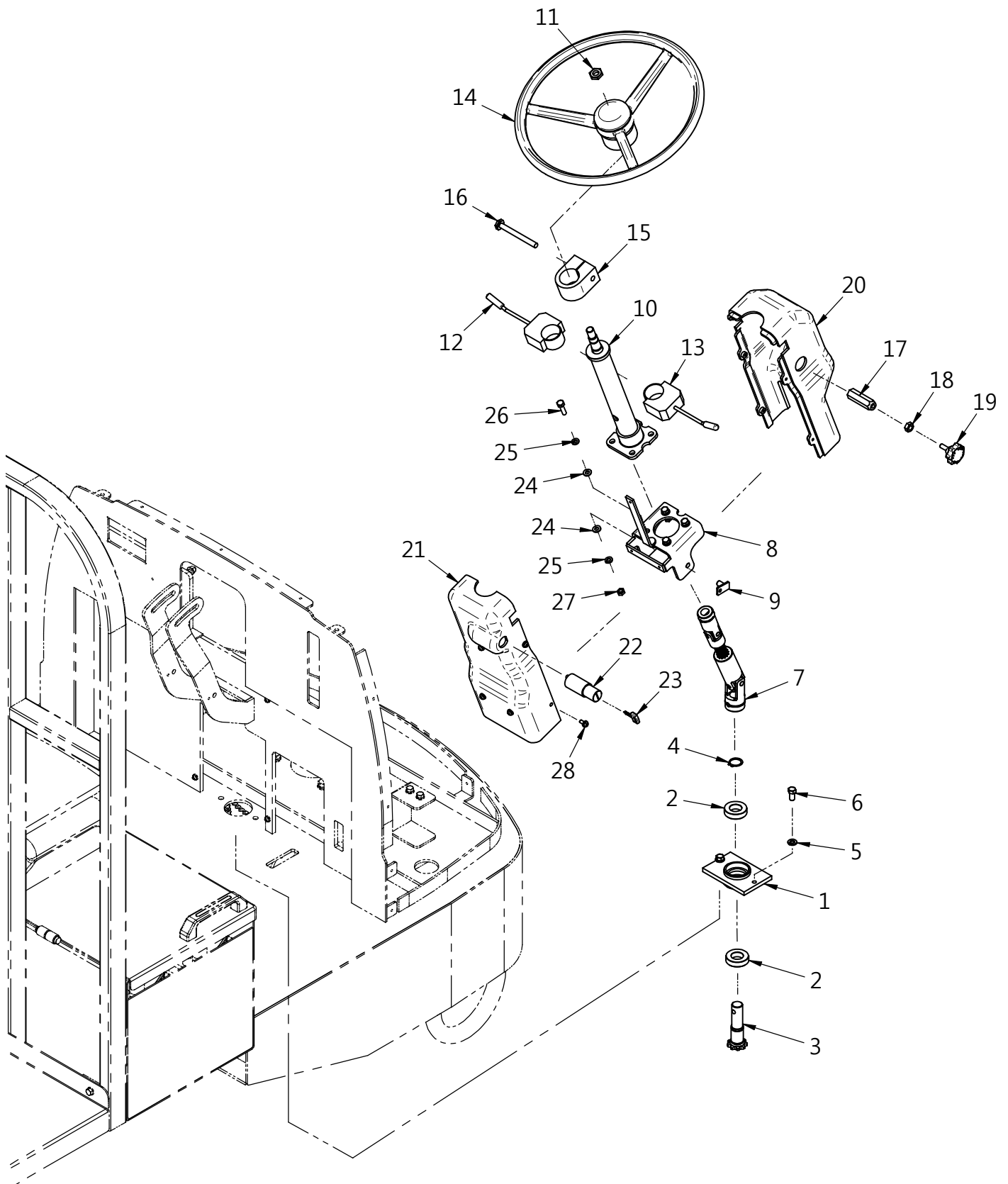
**Electric Platform Truck <SPT-1000 3W>**

**Drive System and Wheels**

**Drive System**

FIGURE 2-1 ITEM NO.	PART NUMBER 코 드 번 호	DESCRIPTION 부 품 명	Q'TY 수 량	REMARKS 비 고
1	42ST-AX3000	구동 액셀 어셈블리 / DRIVE AXLE ASSEMBLY	1	1~13 SET
2	4AWS-H10	하이텐션 스프링 와셔_M10 / HIGH TENSION SPRING WASHER_M10	18	
3	4ABH-H10020	하이텐션 육각 볼트_M10x20L / HIGH TENSION HEX BOLT_M10x20L	10	
4	41PT-07050202	악셀 파이프_좌측 / AXLE PIPE_L	1	
4'	41PT-07050203	악셀 파이프_우측 / AXLE PIPE_R	1	
5	40ST-BK1200	브레이크 라이닝 셋 / BRAKE LINING SET	1	
6	4E10-S25	축용 스냅링_S25 / SNAP RING_S25	2	
7	41PT-07050204	스페이서 / SPACER	2	
8	41PT-07050205	오일 씬 / OIL SEAL	2	
9	4B00-6205Z	볼 베어링_6205 / BALL BEARING_6205	2	
10	4E10-R52	구멍용 스냅링_R52 / SNAP RING_R52	2	
11	4G9T-SP1200	악셀 샤프트_좌측 / AXLE SHAFT_L	1	
11'	4G9T-SP1202	악셀 샤프트_우측 / AXLE SHAFT_R	1	
12	4ABW-12046	휠 볼트_M12 / WHEEL BOLT_M12	8	
13	42ST-BKD2000	브레이크 드럼 / BRAKE DRUM	2	
14	4500-RM40086	휠 림 / WHEEL RIM	4	
15	4500-ST4008	솔리드 타이어 / SOLID TIRE_4.00-8	2	
16	4ABH-H08025	하이텐션 육각 볼트_M8x25L / HIGH TENSION HEX BOLT_M8x25L	8	
17	4AWF-H08	하이텐션 평 와셔_M8 / HIGH TENSION PLAN WASHER_M8	8	
18	4AWS-H08	하이텐션 스프링 와셔_M8 / HIGH TENSION SPRING WASHER_M8	8	
19	4ANH-H08	하이텐션 너트_M8 / HIGH TENSION NUT_M8	8	
20	4ANW-12	휠 너트_M12 / WHEEL NUT_M12	8	
21	4AWF-H10	하이텐션 평 와셔_M10 / HIGH TENSION PLAN WASHER_M10	8	
22	4ABH-H10030	하이텐션 육각 볼트_M10x30L / HIGH TENSION HEX BOLT_M10x30L	8	
23	27DC-440220	구동 모터_48Vx4kW / DRIVE MOTOR_48Vx4kW	1	

List 2-1 : Drive System



**Figure 2-2 : Steering System**

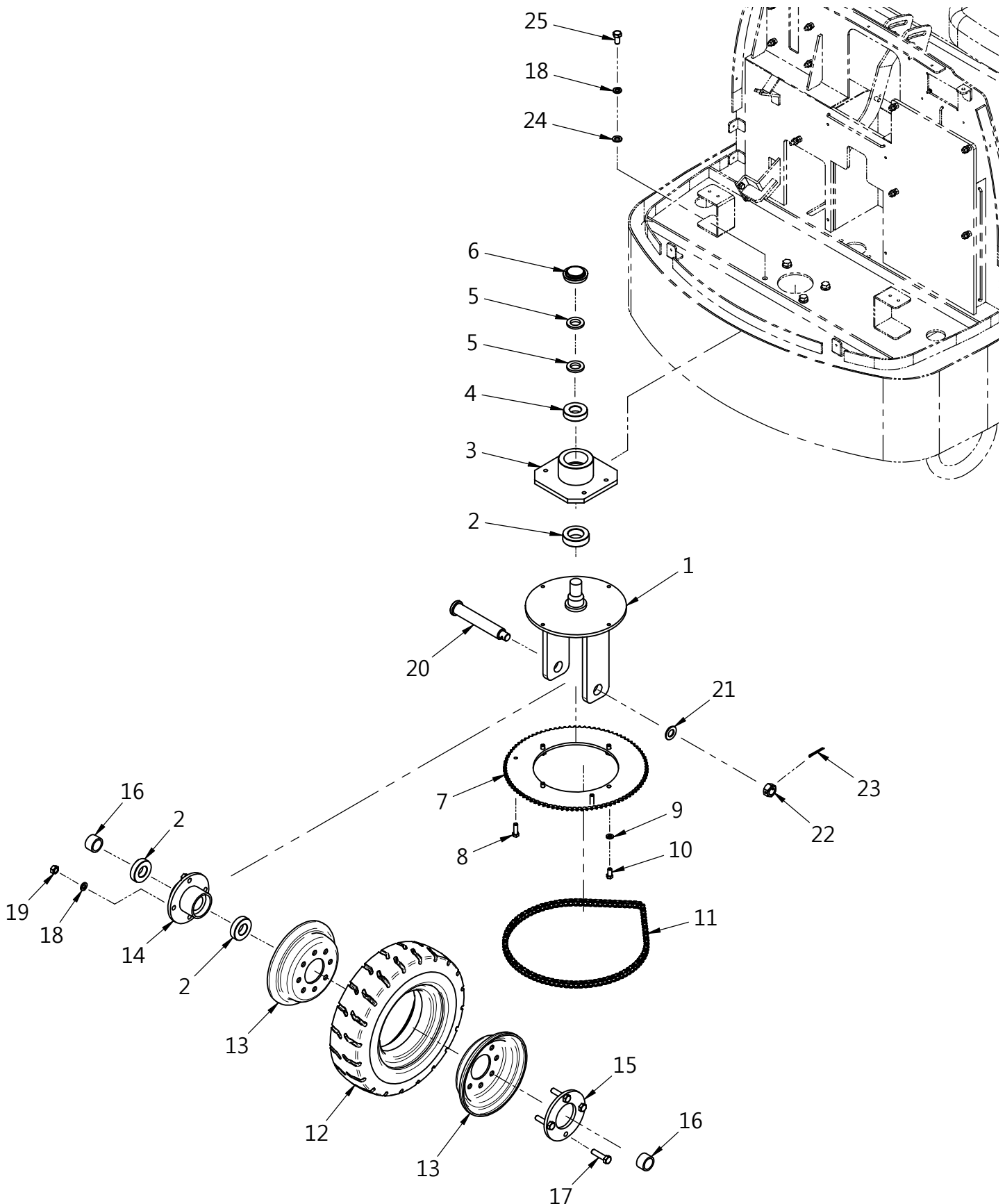
**Electric Platform Truck <SPT-1000 3W>**

**Drive System and Wheels**

**Steering System**

FIGURE 2-3 ITEM NO.	PART NUMBER 코 드 번 호	DESCRIPTION 부 품 명	Q'TY 수 량	REMARKS 비 고
1	40PT-10030101	조향 브라켓 / STEERING BRACKET	1	
2	4B00-6005Z	볼 베어링_6005 / BALL BEARING_6005	2	
3	40PT-10030103	조향 기어 샤프트 / STEERING GEAR SHAFT	1	
4	4E10-S25	축용 스냅링_S25 / SNAP RING_S25	1	
5	4AWS-H10	하이텐션 스프링 와셔_M10 / HIGH TENSION SPRING WASHER_M10	2	
6	4ABH-H10020	하이텐션 육각 볼트_M10x20L / HIGH TENSION HEX BOLT_M10x20L	2	
7	41ST-JNT1000	핸들 조인트 / HANDLE JOINT	1	
8	40ST-10060101	핸들 컬럼 고정 브라켓 / HANDLE COLUMN FIXED BRACKET	1	
9	40ST-10040110	핸들 브라켓 고정 핀 / HANDLE BRACKET FIXED PIN	2	
10	41BF-2140010	핸들 컬럼 어셈블리 / HANDLE COLUMN ASSEMBLY	1	13,14 SET
11	-	핸들 고정 너트 / HANDLE FIXED NUT	1	
12	41BF-2140182	전, 후진 레버 / FRONT-BACK LEVER	1	15,16 SET
13	-	좌, 우측 감빡이 레버 / RIGHT-LEFT LEVER	1	
14	41BF-2140170	핸들 / HANDLE	1	
15	41BF-2140090	핸들 우레탄 / HANDLE URETHANE	1	
16	41BF-2140100	핸들 볼트 / HANDLE BOLT	1	
17	41BF-2140110	핸들 너트 / HANDLE LONG NUT	1	
18	4ANH-10	너트_M10 / NUT_M10	1	
19	40ST-10030114	원형 노브_M10x20L / CIRCLE KONB BOLT_M10x20L	1	
20	41BF-2140152	핸들 컬럼 전면 커버 / HANDLE COLUMN FRONT COVER	1	
21	41BF-2140162	핸들 컬럼 후면 커버 / HANDLE COLUMN REAR COVER	1	
22	41BF-2830020	키 스위치 / KEY SWITCH	1	25,26 SET
23	-	키 / KEY	1	
24	4AWF-08	평 와셔_M8 / PLAN WASHER_M8	8	
25	4AWS-08	스프링 와셔_M8 / SPRING WASHER_M8	8	
26	4ABH-08030	육각 볼트_M8x30L / HEX BOLT_M8x30L	4	
27	4ANH-08	너트_M8 / NUT_M8	4	
28	4ABD-06015S	셈스 볼트_M6x15L / SEM'S BOLT_M6x15L	7	

List 2-3 : Steering System



**Figure 2-3 : Front Wheel Assembly**

**Electric Platform Truck <SPT-1000 3W>**

**Drive System and Wheels**

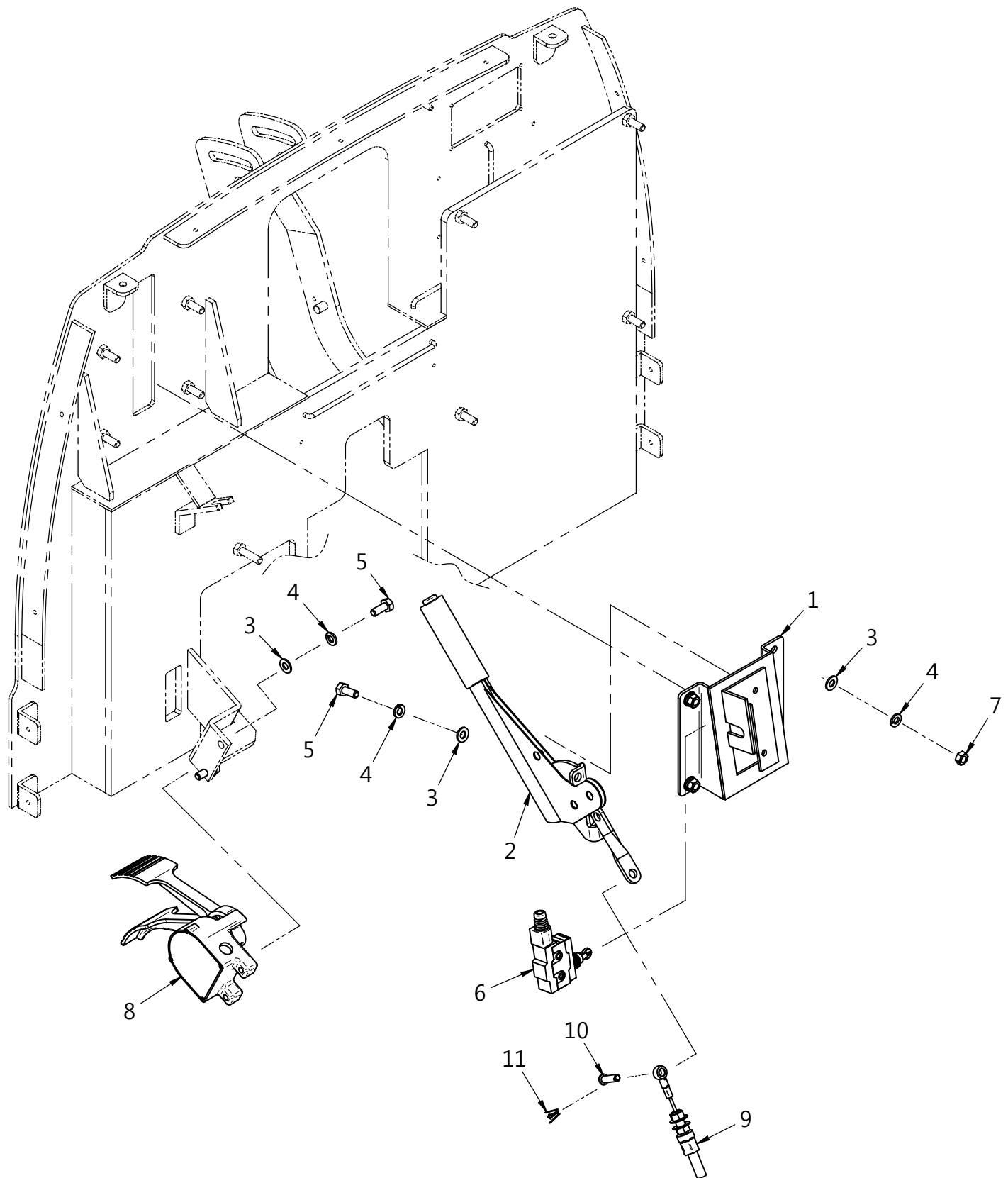
**Front wheel Assembly**

FIGURE 2-4 ITEM NO.	PART NUMBER 코 드 번 호	DESCRIPTION 부 품 명	Q'TY 수 량	REMARKS 비 고
1	41PT-05040201	스티어링 브라켓 / STEERING BRACKET	1	
2	4BTP-32008	테이퍼 롤러 베어링_32008 / TAPER ROLLER BEARING_32008	1	
3	41PT-05040101	스티어링 하우징 / STEERING HOUSING	1	
4	4B00-6206Z	볼 베어링_6206 / BALL BEARING_6206	1	
5	4ANL-AN06	로크 너트_AN06 / LOCK NUT_AN06	2	
6	41PT-05040208	캡 / CAP	1	
7	4GPT-SP3000	조향 스프로킷 / STEERING SPROCKET	1	
8	4ABH-H10030	하이텐션 육각 볼트_M10x30L / HIGH TENSION HEX BOLT_M10x30L	2	
9	4AWS-H10	하이텐션 스프링 와셔_M10 / HIGH TENSION SPRING WASHER_M10	4	
10	4ABH-H10020	하이텐션 육각 볼트_M10x20L / HIGH TENSION HEX BOLT_M10x20L	4	
11	41PT-05040800	스티어링 체인_RS40 / STEERING CHAIN_RS40	1	
12	4500-ST4008	솔리드 타이어_4.00-8 / SOLID TIRE_4.00-8	1	
13	4500-RM40086	휠 림 / WHEEL RIM	2	
14	41PT-05040301	스티어링 휠 허브 / STEERING WHEEL HUB	1	
15	41PT-05040302	스티어링 휠 허브 플레이트 / STEERING WHEEL HUB PLATE	1	
16	41PT-05040205	스페이서 / SPACER	2	
17	4ABH-H12050	하이텐션 육각 볼트_M12x50L / HIGH TENSION HEX BOLT_M12x50L	4	
18	4AWS-H12	하이텐션 스프링 와셔_M12 / HIGH TENSION SPRING WASHER_M12	8	
19	4ANH-H12	하이텐션 너트_M12 / HIGH TENSION NUT_M12	4	
20	41PT-05040204	스티어링 샤프트 / STEERING SHAFT	1	
21	4AWF-H20	하이텐션 평 와셔_M20 / HIGH TENSION PLAN WASHER_M20	1	
22	4ANH-H20	하이텐션 너트_M20 / HIGH TENSION NUT_M20	1	
23	4310-SP08040	분할 핀_P8x40L / SPLINT PIN_P8x40L	1	
24	4AWF-H12	하이텐션 평 와셔_M12 / HIGH TENSION PLAN WASHER_M12	4	
25	4ABH-H12025	하이텐션 육각 볼트_M12x25L / HIGH TENSION HEX BOLT_M12x25L	4	

List 2-4 : Rear Wheel Assembly

## **SECTION 3 Brake System and Accelerator**

Parking Brake and Accelerator System	-----	3-2
Foot Brake System	-----	3-4



**Figure 3-1 : Parking Brake And Accelerator System**



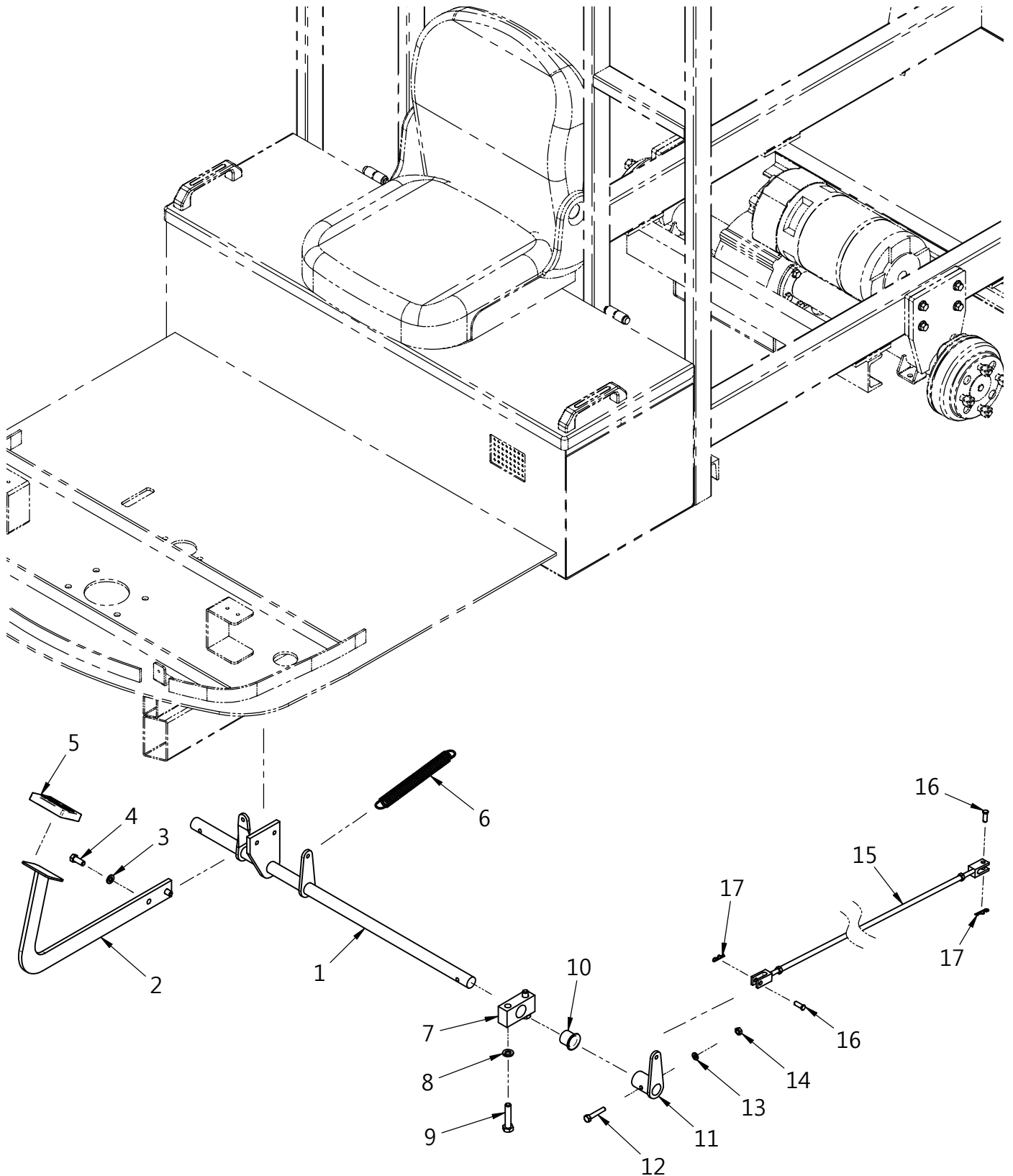
**Electric Platform Truck <SPT-1000 3W>**

**Brake System and Accelerator**

**Parking Brake and Accelerator System**

FIGURE 3-1 ITEM NO.	PART NUMBER 코 드 번 호	DESCRIPTION 부 품 명	Q'TY 수 량	REMARKS 비 고
1	40ST-10060400	파킹 브레이크 브라켓 / PARKING BRAKE BRACKET	1	
2	41BF-2350300	파킹 브레이크 / PARKING BRAKE	1	2,10,11 SET
3	4AWF-08	평 와셔_M8 / PLAN WASHER_M8	8	
4	4AWS-08	스프링 와셔_M8 / SPRING WASHER_M8	8	
5	4ABH-08020	육각 볼트_M8x20L / HEX BOLT_M8x20L	4	
6	23SW-PR508B	마이크로 리미트 스위치 / MICRO LIMITS SWITCH	1	
7	4ANH-08	너트_M8 / NUT_M8	4	
8	41BF-2830070	악셀레이터 / ACCELERATOR	1	
9	49PT-BK4010	브레이크 와이어 / BRAKE WIRE	1	
10	-	브레이크 와이어 핀 / BRAKE WIRE PIN	1	
11	-	분할 핀 / SPLIT PIN	1	

List 3-1 : Parking Brake and Accelerator System



**Figure 3-2 : Foot Brake System**

**Electric Platform Truck <SPT-1000 3W>**

**Brake System and Accelerator**

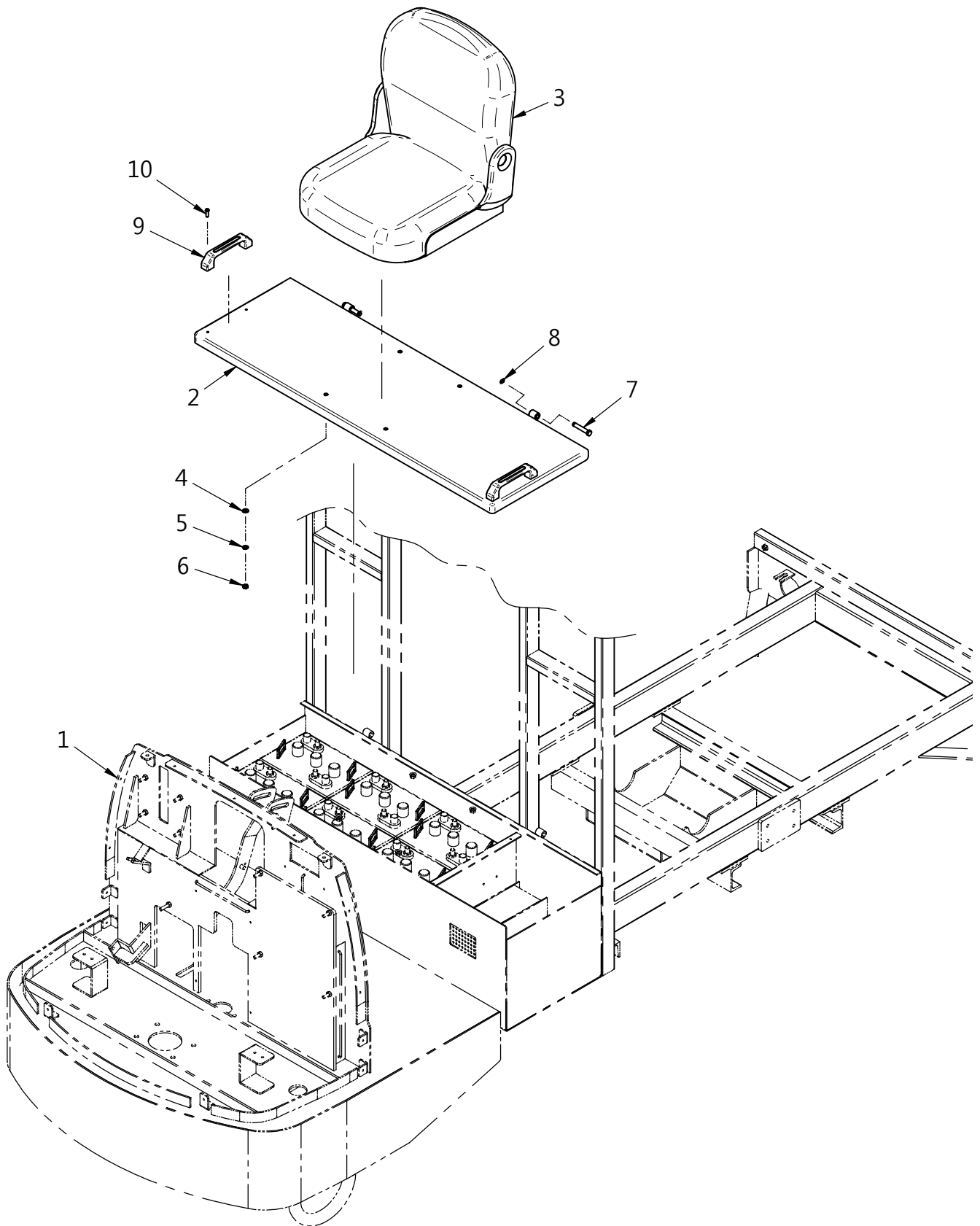
**Foot Brake System**

FIGURE 3-2 ITEM NO.	PART NUMBER 코 드 번 호	DESCRIPTION 부 품 명	Q'TY 수 량	REMARKS 비 고
1	41PT-07060201	브레이크 링크 어셈블리 / BRAKE LINK ASSEMBLY	1	
2	41PT-07060203	브레이크 페달 / BRAKE PEDAL	1	
3	4AWS-10	스프링 와셔_M10 / SPRING WASHER_M10	2	
4	4ABH-10025	육각 볼트_M10x25L / HEX BOLT_M10x25L	2	
5	41ST-43028	브레이크 고무 페달 / BRAKE PEDAL RUBBER	1	
6		스프링 / SPRING	1	
7	41PT-07060202	브레이크 링크 브라켓 / BRAKE LINK BRACKET	2	
8	4AWS-12	스프링 와셔_M12 / SPRING WASHER_M12	4	
9	4ABH-12055	육각 볼트_M12x55L / HEX BOLT_M12x55L	4	
10	4FDU-F2525	플랜지 디유 부시_2525 / FLANGE DU BUSH_2525	2	
11	41PT-07060204	브레이크 링크 브라켓 / BRAKE LINK BRACKET	2	
12	4ABH-08045	육각 볼트_M8x45L / HEX BOLT_M8x45L	2	
13	4AWS-08	스프링 와셔_M08 / SPRING WASHER_M8	2	
14	4ANH-08	너트_M8 / NUT_M8	2	
15	41PT-07060201	브레이크 링크 / BRAKE LINK	2	
16	41ST-10060212	링크 핀 / LINK PIN	4	
17	4310-RP010	R-핀_RP10 / R-PIN_RP10	4	

List 3-2 : Foot Brake System

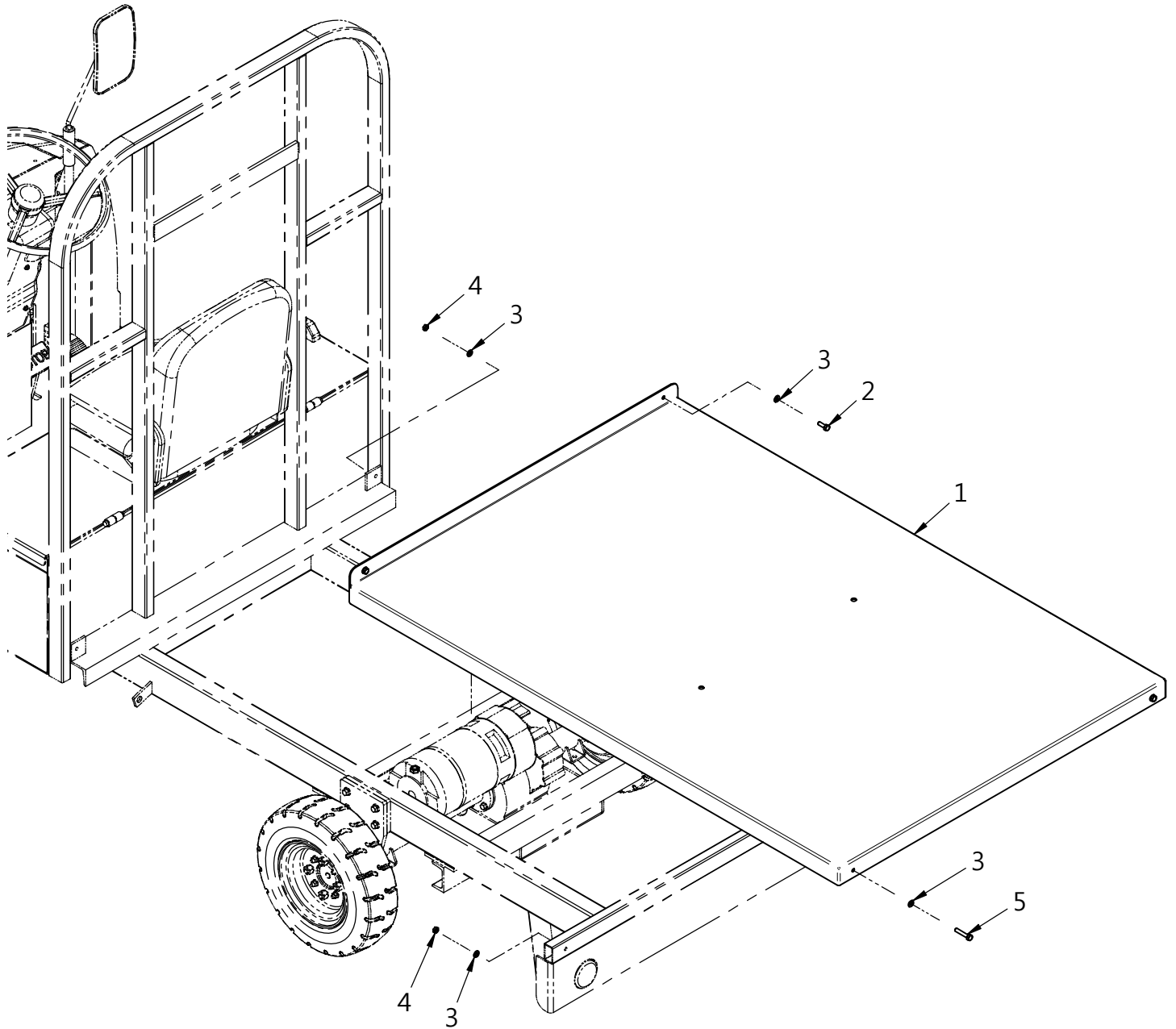
## SECTION 4 Body Frame

Battery Cover Assembly	-----	4-2
Deck Assembly	-----	4-4



**Figure 4-1 : Battery Cover Assembly**





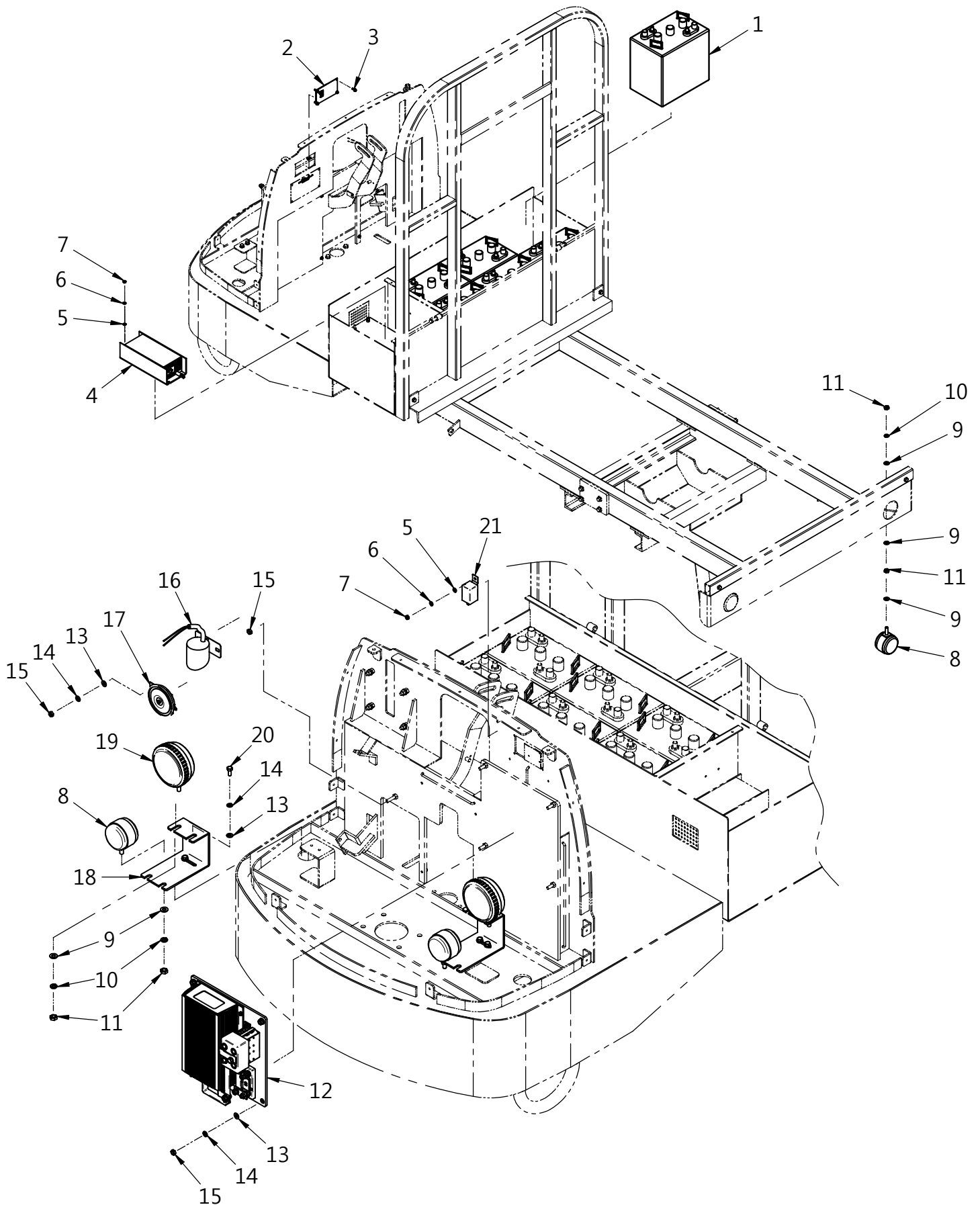
**Figure 4-2 : Deck Assembly**





## **SECTION 5 Electrical System and Components**

Electrical System	-----	5-2
Controller Panel Assembly	-----	5-4



**Figure 5-1 : Electrical System**

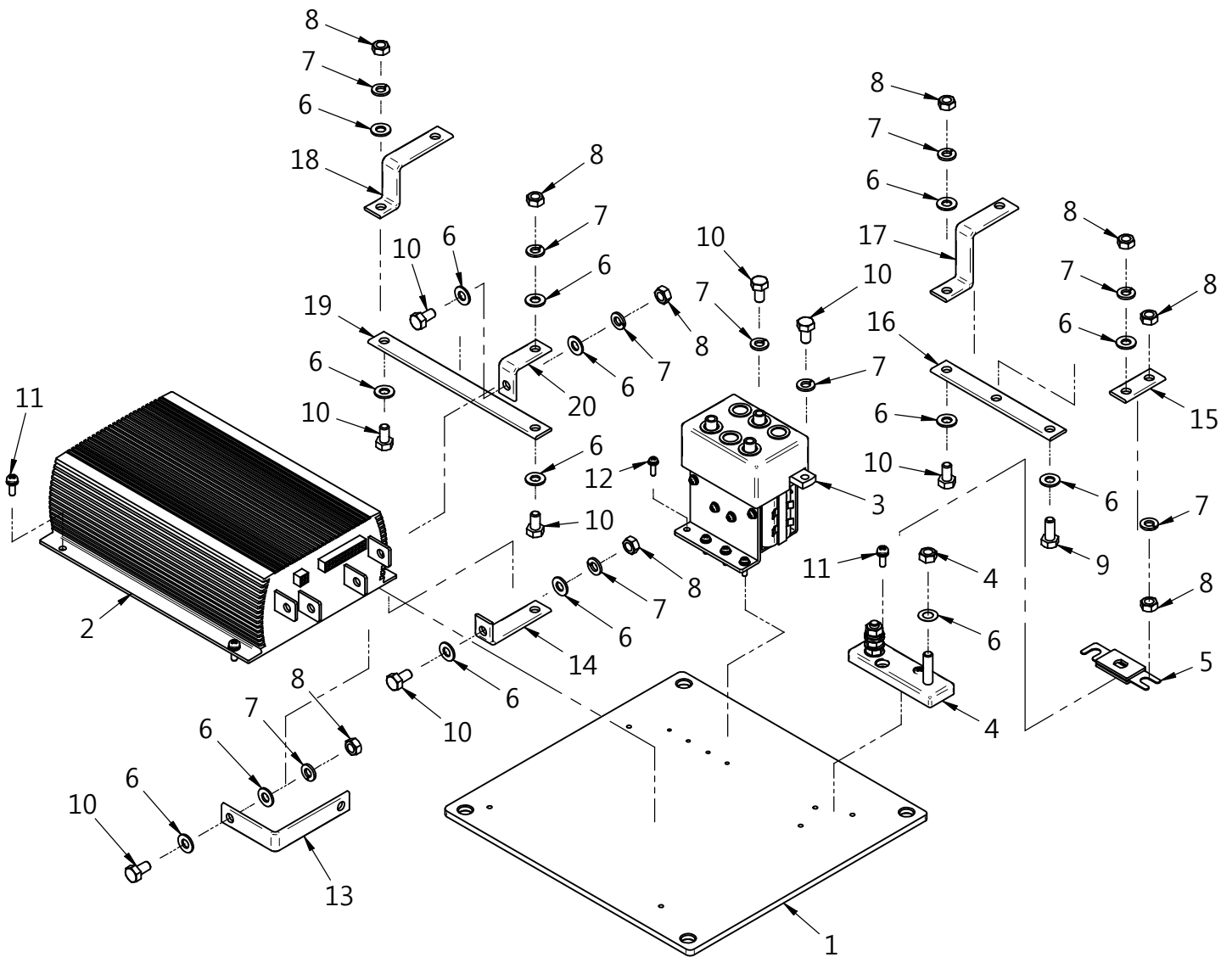
**Electric Platform Truck <SPT-1000 3W>**

**Electrical System and Components**

**Electrical System**

<b>FIGURE 5-1 ITEM NO.</b>	<b>PART NUMBER 코 드 번 호</b>	<b>DESCRIPTION 부 품 명</b>	<b>Q'TY 수 량</b>	<b>REMARKS 비 고</b>
1	26BT-08190	батде리_8Vx190Ah / BATTERY_8Vx190Ah	6	
2	21OP-BR4800	батде리 인디게이터 / BATTERY INDICATOR	1	
3	4ABD-05010S	셈스 볼트_M5x10L / SEM'S BOLT_M5x10L	4	
4	26CH-12416SM	충전기 / BATTERY CHARGER	1	
5	4AWF-06	평 와셔_M6 / PLAN WASHER_M6	5	
6	4AWS-06	스프링 와셔_M6 / SPRING WASHER_M6	5	
7	ANH-06	너트_M6 / NUT_M6	5	
8	25RT-ST48V	사이드 램프 / SIDE LAMP	4	
9	4AWF-10	평 와셔_M10 / PLAN WASHER_M10	10	
10	4AWS-10	스프링 와셔_M10 / SPRING WASHER_M10	6	
11	ANH-10	너트_M10 / NUT_M10	8	
12	2BJN-10070100	콘트롤러 패널 어셈블리 / CONTROLLER PANEL ASSEMBLY	1	
13	4AWF-08	평 와셔_M8 / PLAN WASHER_M8	9	
14	4AWS-08	스프링 와셔_M8 / SPRING WASHER_M8	9	
15	4ANH-08	너트_M8 / NUT_M8	6	
16	25HN-48V-BK	백 혼 / BACK HORN	1	
17	25HN-48V	혼 / HORN	1	
18	40ST-10070401	램프 브라켓 / LAMP BRACKET	2	
19	25RT-BR1000	헤드 램프 / HEAD LAMP	2	
20	4ABH-08020	육각 볼트_M8x20L / HEX BOLT_M8x20L	4	
21	21HA-48V	하azard 유닛 / BRINKER UNIT	1	

List 5-1 : Electrical System



**Figure 5-2 : Controller Panel Assembly**

**Electric Platform Truck <SPT-1000 3W>**

**Electrical System and Components**

**Controller Panel Assembly**

FIGURE 5-2 ITEM NO.	PART NUMBER 코 드 번 호	DESCRIPTION 부 품 명	Q'TY 수 량	REMARKS 비 고
1	21HS-P29306	방열판 / HEAT SINK	1	
2	21BF-8307	컨트롤러 / CONTROLLER	1	
3	23CT-STD150	마그네틱 커넥터 / MAGNETIC CONNECTOR	1	
4	22FH-200A1P	휴즈 홀더 / FUSE HOLDER	1	
5	22FU-275	휴즈 / FUSE	1	
6	4AWF-08	평 와셔_M8 / PLAN WASHER_M8	14	
7	4AWS-08	스프링 와셔_M8 / SPRING WASHER_M8	9	
8	4ANH-08	너트_M8 / NUT_M8	7	
9	4ABH-08020	육각 볼트_M8x20L / HEX BOLT_M8x20L	1	
10	4ABH-08015	육각 볼트_M8x15L / HEX BOLT_M8x15L	8	
11	4ABD-05015	셈스 볼트_M5x15L / SEM'S BOLT_M5x15L	6	
12	4ABD-04015	셈스 볼트_M4x15L / SEM'S BOLT_M4x15L	4	
13	21ET-BT2121	동부스바 / BUS BAR	1	
14	21ET-BT2122	동부스바 / BUS BAR	1	
15	21ET-BT2123	동부스바 / BUS BAR	1	
16	21ET-BT2124	동부스바 / BUS BAR	1	
17	21ET-BT2125	동부스바 / BUS BAR	1	
18	21ET-BT2126	동부스바 / BUS BAR	1	
19	21ET-BT2127	동부스바 / BUS BAR	1	
20	21ET-BT2128	동부스바 / BUS BAR	1	
-	2BCV-ST005	메인 조작선 셋 / MAIN HARNESS SET	1	
-	21ET-BT212	동부스바 셋 / BUS BAR SET	1	13~20 SET
-				
-				
-				
-				
-				
-				
-				
-				
-				

List 5-2 : Controller Panel Assembly

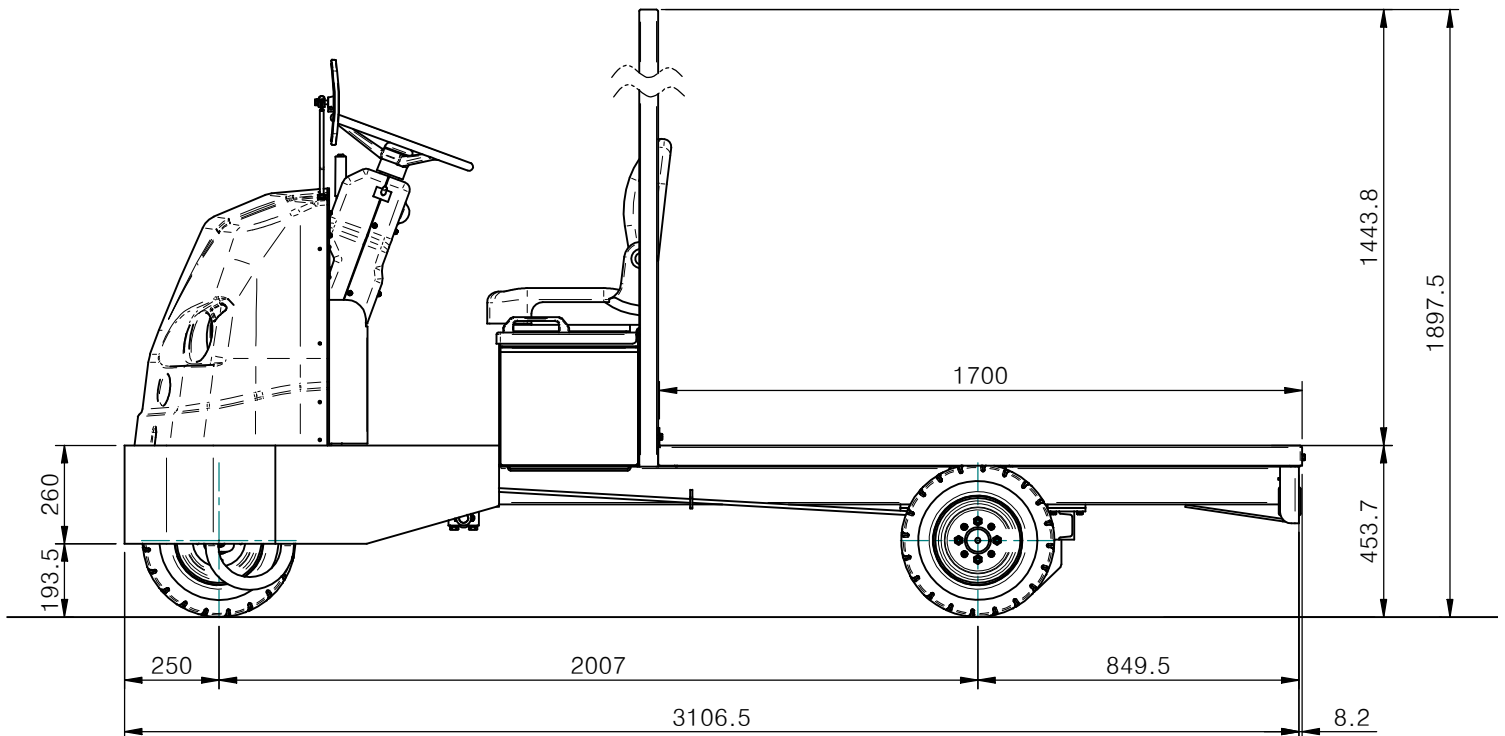
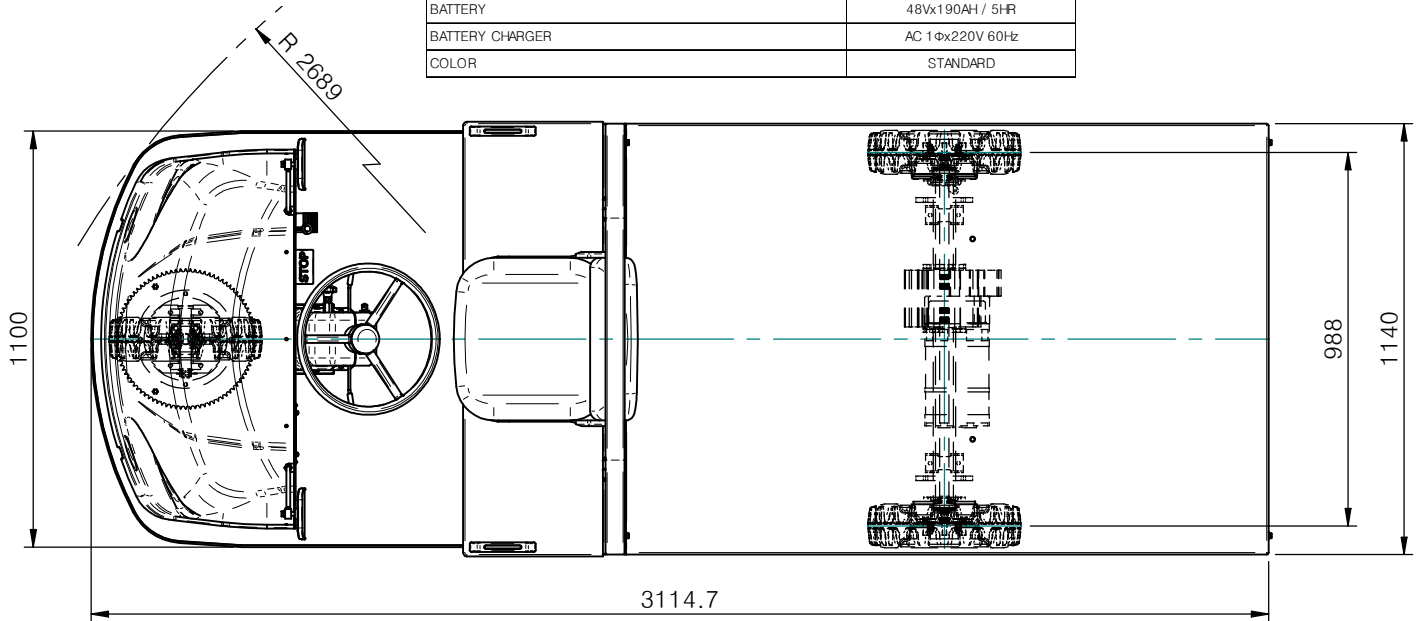
## SECTION 6 Schematics

Assembly Drawing	-----	6-2
Electrical Schematics	-----	6-3

# Electric Platform Truck <SPT-1000 3W>

## Schematics Assembly Drawing

SPECIFICATION			
MODEL		SPT-1000 3W	
CAPACITY	1000	KG	
SELF WEIGHT	782		
OVERALL LENGTH	3115	MM	
OVERALL WIDTH	1140		
OVERALL HEIGHT	1897.5		
WHEEL BASE	2007		
WHEEL TREAD WIDTH	988		
GROUND CLEARANCE	69.5		
TURNING RADIUS	2689		
TRAVEL SPEED	LOW	10	KM / HR
	HIGH	15	
TIRE SIZE	FRONT	4.00-8 (1)	
	REAR	4.00-8 (2)	
DRIVE MOTOR	48V x 4Kw		
BATTERY	48Vx190AH / 5Hr		
BATTERY CHARGER	AC 1Φx220V 60Hz		
COLOR	STANDARD		



**Electric Platform Truck <SPT-1000 3W>**

**Schematics**

**Electrical Schematic**

